

COMPANY INFORMATION / PRODUCT LIST

Clay Machinery Spares CC, was established in 1998, when it was bought over by the late Mr R Hogan from C F Thomas (Pty) Ltd (which was established in 1963), retaining the sole agency of parts supply on the THOMAS Machines and thus have been part of, and understands, the Brick-making Industry since 1963.

Clay Machinery Spares grew from strength to strength, and was bought by Errard Griessel in September 2019, with the handing over of the rights to the CC, from Mrs N Hogan, in March 2022.

Today, Clay Machinery Spares CC, stands proud to be of service to our customers and is managed by Errard Griessel, and wife Natassja Griessel, from our Office based in Springs, Gauteng and our workshop based in Eloff, Mpumalanga.

Contact details as follows:

Errard Griessel (Technical I& Sales)
Mobile Phone : +27 (0)84 251 5474
Email : errard@clayms.co.za
Website : www.clayms.co.za

Natassja J Griessel (Administration / Office)
Mobile Phone : +27 (0)83 950 5999
Email : natassja@clayms.co.za
Office Phone : +27 (0)79 702 6393
Office Phone : +27 (0)11 362 0010
General Email : info@clayms.co.za

On the following pages, you will find some pictures and information on the products we make and supply on a regular basis to various customers. A big part of our expertise goes to Ceramic Extrusion Parts, such as Shapercap / Die Boxes, Oil Bells, Ceramic Cores and Bridge Pieces, etc. for all Clay Brickmaking Machines. With all our Ceramic products we can supply a quality Data Sheet as we supply a very high-quality Ceramic and are proud of the product "formula" we have perfected. We are also able to supply steel items; casted items and some CNC Machining you require.

Please do contact us, at any time, with your query and we will be glad to assist and be of service to our Customers. However, if you have another product that we might not have listed, please contact us and we will gladly be of service and see if we can possibly make a new design or implement new parts in order to save our customers precious production time and money. We are also in a position to manufacture new patterns on casted items.

We trust that the above will prove of interest to you and should you have any further queries please do not hesitate to contact us

Assuring you of our best attention and service at all times, we remain

Yours Faithfully,

CLAY MACHINERY SPARES CC

Sent electronically, therefore unsigned

Sent electronically, therefore unsigned

E Griessel
Technical / Sales

N J Griessel
Administration

CLAY MACHINERY SPARES CC

Reg No: 1998/068370/23

VAT No: 4890102041

Customs Code: (Coming soon)

Website: www.clayms.co.za

Member / CEO / Technical / Sales:

Errard Griessel @ +27 (0)84 251 5474 and errard@clayms.co.za

Administration/ Finance / Office / HR:

Natassja Griessel @ +27 (0)83 950 5999 and natassja@clayms.co.za

Office: +27 (0)11 362 0010 / +27 (0)79 702 6393 or info@clayms.co.za

Office / Postal Address:

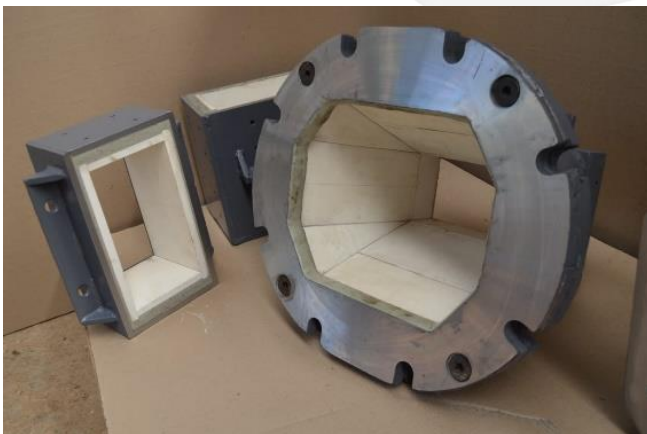
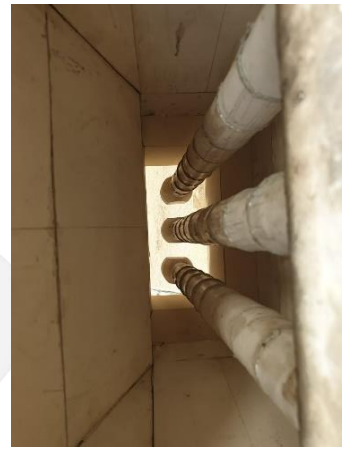
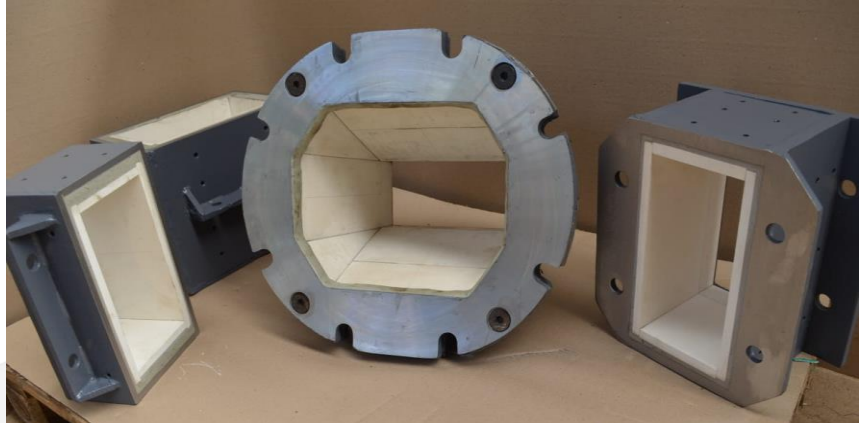
17 Newhouse Street; Rowhill; Springs; 1559; Gauteng; SA

Workshop Address:

Plot 233 Susan Avenue; Eloff; 2211; Mpumalanga; SA

PRODUCT LIST

- **Ceramic Lined Shapercaps / Die Boxes**
 - Single or Double.
 - New or Re-Line.
 - With 5mm radius corners or not
 - Made to Customer size
- **Ceramic Lined Oilbell**
- **Ceramic Lined Lubrication Ring**
- **High-Pressure Gasket set**
 - New or Re-Line.
 - Made to Customer size.
- We are also able to supply **Ribbed Ceramic Lined Shapercaps / Die Boxes.**
 - New or Re-Line
 - Made to Customer size



CLAY MACHINERY SPARES CC

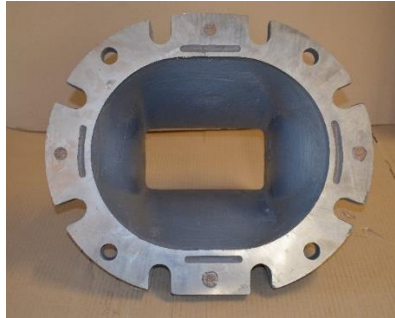
Reg No: 1998/068370/23
VAT No: 4890102041
Customs Code: (Coming soon)
Website: www.clayms.co.za

Member / CEO / Technical / Sales:
 Errard Griessel @ +27 (0)84 251 5474 and errard@clayms.co.za
Administration/ Finance / Office / HR:
 Natassja Griessel @ +27 (0)83 950 5999 and natassja@clayms.co.za
Office: +27 (0)11 362 0010 / +27 (0)79 702 6393 or info@clayms.co.za

Office / Postal Address:
 17 Newhouse Street; Rowhill; Springs; 1559; Gauteng; SA
Workshop Address:
 Plot 233 Susan Avenue; Eloff; 2211; Mpumalanga; SA
 Page 2 of 6

- **Steel Oilbell**

- 27% Chrome steel
- Outlet size of 232mm x 120mm



- **Steel Lubrication Ring**

- 27% Chrome steel
- With an approximate 20mm Tungstenia coating
- Size to fit Oilbell, or as per customer specification



- **Ceramic Cores / Cones**

- Any shape and size as per customer specification
- Data-sheet / Product Quality Sheet available.



- **Pug Knives / Mixer Knives (27% Chrome) and Straight Shanks**
- **Inner and Outer Springs**
- **Cutting Wire** – minimum order quantities apply...



CLAY MACHINERY SPARES CC

Reg No: 1998/068370/23
VAT No: 4890102041
Customs Code: (Coming soon)
Website: www.clayms.co.za

Member / CEO / Technical / Sales:
Errard Griessel @ +27 (0)84 251 5474 and errard@clayms.co.za
Administration/ Finance / Office / HR:
Natassja Griessel @ +27 (0)83 950 5999 and natassja@clayms.co.za
Office: +27 (0)11 362 0010 / +27 (0)79 702 6393 or info@clayms.co.za

Office / Postal Address:
17 Newhouse Street; Rowhill; Springs; 1559; Gauteng; SA
Workshop Address:
Plot 233 Susan Avenue; Eloff; 2211; Mpumalanga; SA
Page 3 of 6

- **Steel and Tungsten Lined Liners**

- (Long and Short) and the Inlet can be custom made should this be required and applicable to the product; for example, should your Oilbell still be in working condition, the Liners can be custom made to suit (on special request). This custom make is also applicable on the Ceramic Lined Liners below.



- **Steel and Ceramic Lined Liners**

- (Long and Short)

- **Steel and Ceramic Lined Liners**

- (Long and Short) can be **Re-Lined**, should the steel still be in a good condition. The picture on the right shows the “before / old” (bottom) and “after / new” (top). Note the re-line is only applicable to the ceramic lined liners, not the tungsten as mentioned above.



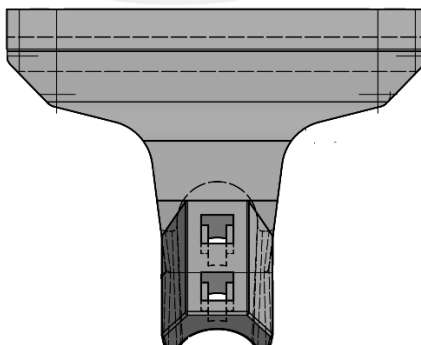
- **Travertine Blades**

- With Tungsten Strip. Available in various sizes as per customer specification, and can be sharpened to be used again, saving our customers money.



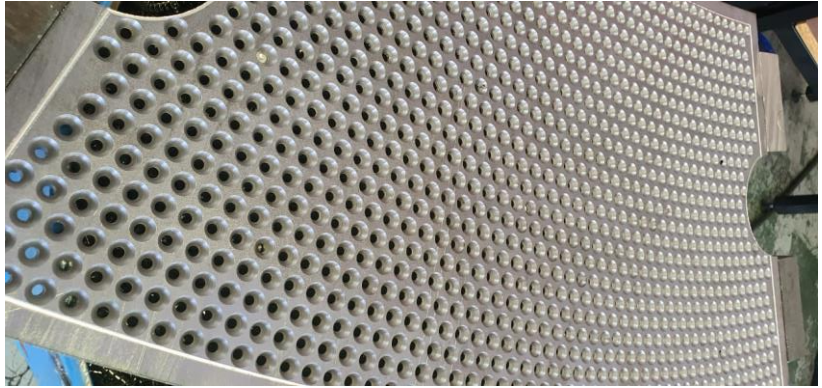
- **Mixer Paddle**

- Material: to be made according to Customer requirement / specification



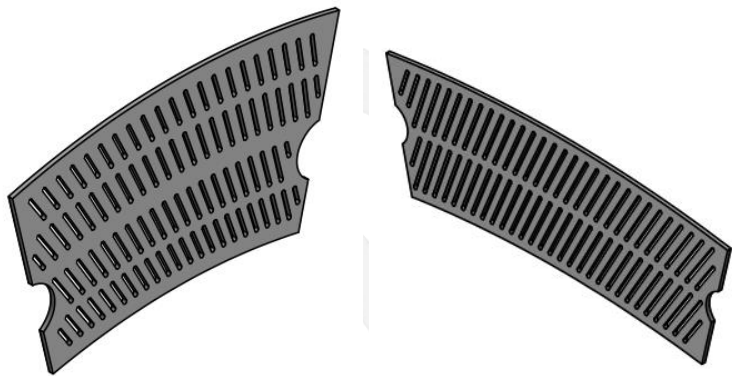
Drilled Grids on Incla Mark III

- Inner and Outer



Slotted Grids on Incla Mark III

- Inner and Outer



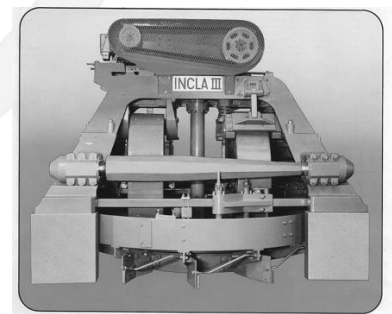
Product list on items supplied, however at this stage we unfortunately do not have photo's or pictures...

Thomas Machine Parts:

- 4" and 5" Augers for Thomas Machines – complete sets
- Barrel Liners
- Etc. / ALL Parts for Thomas Machines. Kindly enquire with us...

Incla Mill III Parts: (57B)

- Roller Hoop Segments and Dead Plate Segments
- Bolts with Nuts and Washers for the Roller Hoops and Dead Plates
- Spider Arms and Pan Arms
- Small and Large Main Scraper Brackets
- Scraper Holders
- Under Scrapers; Bottom Scrapers
- Bottom Scraper Holders (16mm thick)
- Etc.



Other Items:

- Clutch Plates – minimum order quantities apply
- Hazémag Hammers (Hadfield Manganese) or Casted Hammers (27% Chrome)
- Pre-Groover Blade sets
- Swiper Bosses
- Etc.

CLAY MACHINERY SPARES CC

Reg No: 1998/068370/23

VAT No: 4890102041

Customs Code: (Coming soon)

Website: www.clayms.co.za

Member / CEO / Technical / Sales:

Errard Griessel @ +27 (0)84 251 5474 and errard@clayms.co.za

Administration/ Finance / Office / HR:

Natassja Griessel @ +27 (0)83 950 5999 and natassja@clayms.co.za

Office: +27 (0)11 362 0010 / +27 (0)79 702 6393 or info@clayms.co.za

Office / Postal Address:

17 Newhouse Street; Rowhill; Springs; 1559; Gauteng; SA

Workshop Address:

Plot 233 Susan Avenue; Eloff; 2211; Mpumalanga; SA

CMS CC Proudly Introduces our Newest Product to our Product List (Imported Product):

ROLLER SHELLS FOR ROLLER CRUSHERS (EUROPEAN STANDARD)



INFORMATION:

- We can supply all kinds of Roller Shells, according to Customer Requirements, and more specific in the Clay Brickmaking (preparation) Machines such as Clay Disintegrators, Smooth Roll Crushers, Roller Mills, etc.
- Production methods used by the Manufacturer of the roller shells includes Static Casting method against sand or a High-speed Centrifugal Casting against a permanent mould method. The Centrifugal casting is of course preferred as the Internal structure is much better when put through the required heat-treatment, thus giving it a higher wear-resistance and toughness / hardness (as per European specification and preference)
- Various sizes are available, and we urge you to, should you be interested and send us an enquiry, to please include a drawing with exact sizes and requirements. Our sizes can range from 800mm x 600mm up to 1400mm x 1200mm, and the applicable certificates are supplied with each roller shell.

THE PRODUCT / MATERIAL OF ROLLER SHELL:

- KN480 (Recommend)	Alloy fractions: C; Si; Mn; P; Mg; Ni; Mo	Hardness: 500±30HV / ~46.9-51.1HRC
- KN530	Alloy fractions: C; Si; Mn; P; Ni; Cr; Mo	Hardness: 550±30HV / ~50.5-54.1HRC
- KN580	Alloy fractions: C; Si; Mn; P; Ni; Cr; Mo	Hardness: 600±30HV / ~53.6-56.8HRC
- KN500	Alloy fractions: C; Si; Mn; P; Ni; Mo	Hardness: 480±30HV / ~39.8-45.3HRC
- CHM202 (Chrome)	Alloy fractions: C; Si; Mn; P; Mg; Ni; Cr; Mo	Hardness: 730±30HV / ~60.4-62.9HRC

PACKAGING & SHIPPING:

- Lead time approximately 4-6 weeks from receipt of drawing and accepted quote, deposit and drawing.
- Shipping & clearing approx. 4-6 weeks
- Packed in wooden crates and shipped per container



INDICATIVE PRICING:

- Initial Pricing includes all shipping and full import. As this is new, a deposit will be required upon receipt of order, thereafter this is up to negotiations / T&C's
- Subject to Rate of Exchange variations
- Pricing very much dependant on material and size

Please contact us with your enquiry, we are eager to serve you and meet your requirements...

CLAY MACHINERY SPARES CC

Reg No: 1998/068370/23

VAT No: 4890102041

Customs Code: (Coming soon)

Website: www.clayms.co.za

Member / CEO / Technical / Sales:

Errard Griessel @ +27 (0)84 251 5474 and errard@clayms.co.za

Administration / Finance / Office / HR:

Natassja Griessel @ +27 (0)83 950 5999 and natassja@clayms.co.za

Office: +27 (0)11 362 0010 / +27 (0)79 702 6393 or info@clayms.co.za

Office / Postal Address:

17 Newhouse Street; Rowhill; Springs; 1559; Gauteng; SA

Workshop Address:

Plot 233 Susan Avenue; Eloff; 2211; Mpumalanga; SA